

MIRCO

VOL. I
1011-9000
SLAM
1017-9000
SLAM

VIDEO GAMES
SERVICE MANUAL



MIRCO GAMES

DIVISION OF MIRCO, INC.
Manufacturers of Coin and Non-Coin
Operated Amusement Games

1960 WEST NORTH LANE, PHOENIX, ARIZONA 85021
TELEPHONE (602) 997-5931

VIDEO GAMES
SERVICE MANUAL

A Publication of Mirco Incorporated
Games Division

Congratulations on your purchase. We at Mirco Games take great pride in producing the finest in coin and non-coin operated amusement games on the market. Well maintained equipment will provide greater pleasure for your customers and increased profits for you. A thorough reading of this manual will clarify our Warranty and provide product knowledge and maintenance procedures.

This manual supercedes all other manuals and warranties expressed or implied therein.
(4-1-76)

TABLE OF CONTENTS

<u>Section</u>	<u>Page</u>
I Warrantly	1
II Inspection	2
Installation	2
Cleaning	2
Top	2
Outside Window	2
Inside Window	3
Cabinet	3
Legs or Base	3
Picture Display Tube	3
Operation	4
Getting Inside the Game	4
To Start Game	4
Selecting Mode	5
Player vs Player	5
Player vs Game	5
Free Game	6
Figure 1-1 Back View of Monitor	7
III Troubleshooting Guide	8
Normal Conditions	8
Adjustments to be Made	8
Game Points	8
Paddle Movement	8
Picture	9
Possible Computer Board Malfunctions	9
Score Related	9
Paddle Related	9
Tone Related	9
Free Game Related	10
Game Related	10
Play Field Related	11
Ball Related	11
High Intensity LED's	11
Coin Operation	11
Ball Speed Up	12
Pre-game Show	12
Video Related	12
Removal of Main Printed Circuit Boards	13
Replacement of Main Printed Circuit Boards	14
Figure 2-1	14
Figure 2-2	15
Figure 2-3	16

TABLE OF CONTENTS (continued)

<u>Section</u>	<u>Page</u>
IV Miscellaneous Parts to be Replaced	17
Player Mode Switch	17
Control Potentiometers	17
Start Button	17
Monitor	17
Monitor Chassis	17
Audio Panel	18
Monitor Panel	18
C43 Capacitor	18
C47 Capacitor	18
Light Bulb	18
Figure 3-1 Monitor Chassis	19
Figure 3-2 Monitor Chassis	20
Figure 3-3 Audio Panel	21
Figure 3-4 Monitor Panel	22
Figure 3-5 Monitor Panel	23
V Miscellaneous Problems and Possible Solutions	24
Coin Mechanism Related	24
Audio Related	24
Free Game Related	24
Control Lever Related	24
Figure 4-1 Control Lever	25
Paddle Adjustments	26
VI Replacement of Any Item in the Game	28
VII Removal of Parts	29
Top	29
Speaker	29
Free Game Light	29
Monitor	29
Paddle Control Lever Assembly	29
Illumination Lamps	30
Game Mode Rotary Switch	30
Start Switch	30
Coin Mechanism	30
VIII Additional Information	31
Repair Costs (out of warranty)	32
Figure 5-1 Individual Control	33
Wiring Harness	
Figure 6-1 Original Joystick Control	34
Harness (1011-9000)	
Figure 6-2 Modified Pro/Am Control	35
Harness (1017-9000)	
Figure 7-1 Cabinet Assembly	36
Figure 7-2 Cabinet Assembly	37
Figure 8-1 Monitor Schematic	38

Some illustrations in this booklet are made possible by the use of the Motorola Service Manual 68P65130A70.

To order additional copies, see your local distributor, or write:

MIRCO GAMES DIVISION
Mirco Incorporated
1960 West North Lane
Phoenix, Arizona 85021

I WARRANTY

MIRCO warrants the Goods to be free from defects in material and workmanship under normal use and service for a period of twelve (12) months from the date of delivery on all parts except potentiometers, for which the warranty period is ninety (90) days from the date of delivery. MIRCO MAKES NO REPRESENTATIONS OR WARRANTIES CONCERNING THE EQUIPMENT WHETHER EXPRESS OR IMPLIED BY OPERATION OR OF FITNESS FOR ANY PARTICULAR PURPOSE, OR WITH RESPECT TO PATENT INFRINGEMENT, EXCEPT AS MAY BE SPECIFICALLY MADE HEREIN. MIRCO's obligation under its warranty herein is limited to the repair or replacement of such parts which have been returned to MIRCO's plant at Purchaser's expense and which examination shall disclose to MIRCO's satisfaction to have been so defective and to shipment of such repaired or replacement parts to the Purchaser f.o.b. the shipping point. This warranty does not apply to any of MIRCO's products which have been repaired or altered by unauthorized personnel or service facilities in any way or which have had the unit serial number altered or removed.

Upon acceptance of the Goods, the Purchaser agrees to assume all liability for any damages, and bodily injury which may result from the use or the misuse of others, and to hold MIRCO GAMES, INC., harmless from liability and claims arising out of the use of the Goods by any person.

Parts returned for service must contain the game model and serial numbers. Please use the red repair tag for this information. They also should be packaged to insure no damage is incurred during the shipment and shipped to 1960 West North Lane, Phoenix, Arizona, 85021. The original shipping carton is recommended.

Installation

1. IMPORTANT - Do not plug unit into wall power receptacle until inspection of game is completed.
2. Upon receipt of unit, check out immediately for damage. Mirco games are shipped in a carefully designed package intended to prevent shipping damage. However, if damage should occur a claim must be made with the carrier upon delivery of the game. Storage of packing material is recommended in the event reshipment of the game or a game part is desired.

Cleaning

IMPORTANT - UNPLUG GAME FROM POWER RECEPTACLE DURING CLEANING, INSPECTION, OR WHENEVER REPLACING A PART, TO PREVENT POSSIBLE ELECTRICAL SHOCK.

Top

Description - The top is of a one piece laminated formica. The surface is resistant to scratches. To help maintain the luster, occasional waxing will help. Scratches may be covered by using 'Old English' furniture polish.

Cleaning - The surface may be cleaned with any standard cleaner designed for this type of finish.

Outside Window

Description - The window used in the top is made of break resistant 3/16" flow tempered glass. The top surface is highly resistant to scratches and chips. Although scratching may result, shattering from a sharp blow is not likely.

Cleaning - Daily cleaning of the window may be accomplished using clear water and paper towels. Window cleaners may be used; however, overspray from these products will also remove wax or protective finish from the top. It is highly recommended that anti-static cleaner and a non-abrasive cloth be used.

Inside Window

Description - The tinted display window is made of break resistant acrylic plexiglass which is 16 to 20 times stronger than glass. Although scratching may result, shattering from a sharp blow is not likely.

Cleaning - Cleaning of the window may be accomplished by using any anti-static cleaner (such as Kleenmaster Brilliamize, made by Chemical Products Co., Omaha, Nebraska) and a soft non-abrasive cloth. If anti-static cleaners are not available, a mixture of Joy and water may be used. The window should be waxed with car wax (paste) after 15 to 20 cleanings. Hair-line scratches or spider webbing can be removed using Vestal Plus Polish (Vestal Laboratories, St. Louis, Missouri, 63110). CAUTION: Window or other ammonia cleaners must not be used.

Cabinet

Description - The outside surfaces of the cabinet are covered with a mar-resistant wood grained vinyl to insure long life and durability.

Cleaning - These finished cabinet surfaces may be cleaned with any standard cleaners designed for this type of finish. Deep scratches may be taken out using 'Old English' furniture polish.

Base

Cleaning - Mild soap and warm water should be used. The base may be touched up using brown enamel paint.

Picture Display Tube

Cleaning - May be accomplished with a damp (damp only) lintless towel. Do not apply liquid to tube - apply liquid to towel first, making sure it is only damp before attempting to clean tube.

Operation

1. Open front door with the key.

To change end of game score point from 11 to 15:

- a. While you have the front door open push the metal tab (hanging down from the middle upper inside of the door jam) to the back. This will release the lid lock.
- b. While holding the tab back, push the lid open and lock into place with the lock-arm located at the rear right hand side of the game.
- c. Select game point of either 11 or 15 by moving switch on the 3700 circuit board on your back left (switch down for 11, upwards for 15). The switch is normally preset at the factory for 11 count.
- d. Unlock the lock-arm and carefully shut the lid, giving it a little downward push. Listen for a latching sound - it should now be locked in the down position. Give the lid a sharp pull upward to make sure it is locked before shutting the front door to the cabinet. Place game in final location. Do not carry by top, use cabinet body.

2. To start game:

- a. Close and lock the front door. Connect to 110V 2-wire outlet only. Operation of unit not guaranteed if ungrounded 2-wire adapters are used.

Operation (continued)

NOTE: For those games placed in locations where 220VAC at 50Hz is required, the following is applicable. SW1 located on the monitor chassis must be placed in the 200V position. The power input cored must be converted for the same voltage and applicable power source plug.

IMPORTANT: All games are equipped with a safety interlock switch for your protection. The interlock switch allows AC power to the unit only when the door is closed and locked.

3. Selecting Mode:

- a. A play field should appear within moments on the display screen. Brightness, contrast and volume are preset at the factory. However, location, lighting and accoustics may vary, requiring readjustment of these controls (Ref. Fig. 1-1). It is recommended that adjustments other than the ones indicated be performed by a qualified technician.
- b. Select type of mode (i.e., player vs player or player versus game):

Player vs Player

Select Pro (small paddles) or Am (large paddles). Deposit one coin into the coin mechanism. This will display one (1) paddle for each player. Deposit a second coin for one additional paddle per player (for doubles). The first coin will cause the score to reset to 0-0. Push "To Start" button, game will commence immediately with a beginning serve tone.

Player vs Game

Deposit one coin for one (1) paddle for the challenger. Deposit a second coin for an additional paddle. The first coin will cause the score to reset to 0-0. Push "To Start" button - game will commence immediately with a beginning serve tone. For Am (large paddles) place knob into Am mode. (See Section VIII #3)

Operation (continued)

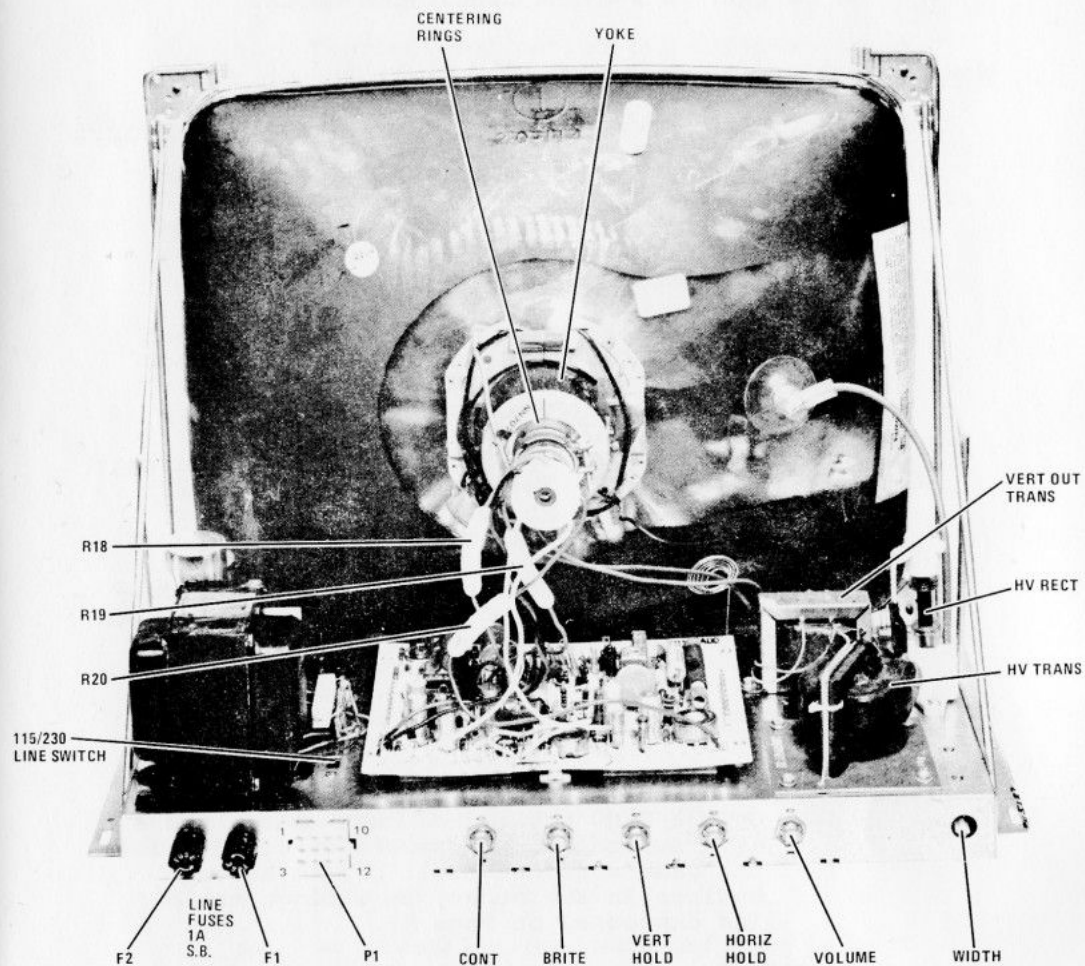
4. Free Game

A free game is available only in the player versus game mode. Upon the challenger winning, the free game light will come on.

- a. Select mode
- b. Push the "To Start" button for the second game. The free game light should remain on during the free game.
- c. You cannot win a consecutive free game on top of the first free game. Only one free game is available per the original game.

NOTE: If the game does not operate properly, refer to the Troubleshooting Guide to determine the reason for the failure and steps that must be taken to correct operation.

NOTE: If game does not operate properly, refer to the Troubleshooting Guide to determine reason for failure and steps that must be taken to correct operation.



Chassis Component Location Rear View

FIGURE 1-1

4. Free Game Related - 3700 Board
 - a. Gives intermittant free game during regular game
 - b. Gives free game, but no free game light (see "Replacement of Free Game Light")
 - c. Gives free game light, but no free game
 - d. Give no free game
 - e. Free game light does not stay on during free game
 - f. Paddles are removed after winning first game preventing play of free game
 - g. Game will not end at score point during free game

5. Game Related

In Player versus Machine mode - 3700 board:

- a. Backboard and guard appear but no right paddle
- b. Backboard, guard and right paddle appear but right inside paddle does not appear with insertion of second quarter
- c. Backboard does not appear
- d. Guard does not appear
- e. No goal in back wall
- f. Paddles disappear after winning free game

In Player versus Player mode - 3700/3701 boards:

- a. First quarter does not give paddle on right side
- b. First quarter does not give paddle on left side
- c. Second quarter does not give paddle on left side
- d. Second quarter does not give left inside paddle
- e. Half or only part of any paddle displayed
- f. Top boundary missing all or in part
- g. Net missing

5. Game Related (continued)

End of game - 3700 board

- a. Game ends on 1 or 5
- b. Game ends immediately after start
- c. Score reaches 11 or 15, then goes back to 10
- d. Games does not end when score on right reaches 11 or 15
- e. Game does not end when score on left reaches 11 or 15
- f. Game continues beyond 11 or 15

6. Play Field Related - 3700 board

- a. Multiple fields
- b. No net or partial net
- c. No video, but ball
- d. Fuzziness (See Figure 3-5 for focus control)
- e. Playfield light with black borders

7. Ball Related - 3700/3701 boards

- a. No balls
- b. Multiple balls
- c. Erratic balls, jerky balls
- d. Unusually high or low travel speeds
- e. No angle to rebound off a paddle
- f. Score doesn't change at time of win
- g. Does not go through goal (during Player versus Game mode)
- h. Fails to bounce off walls or paddles

8. High-Intensity LED's - 3700 board

- a. Under lid for the illumination of the coin acceptor. LED's test okay, but don't light. (See Page 24)

9. Coin-Operation - 3700 board

- a. Related problems with number of paddles appearing on playfield. (See Page 24)

Possible Computer Board Malfunctions (continued)

10. Ball Speed Up - 3700 board
11. Pre-game Show - 3701 board
 - a. Pre-game show (except ball)
12. Video Related - 3700/3701 boards
 - a. *No picture or just a flash on screen at time of plugging in or unplugging from wall socket
 - b. *White screen
 - c. Ball and/or playfield in bad contrast
 - d. Tube lights up, but no playfield
 - e. Vertical or horizontal hold or contrast unadjustable from monitor chassis. See "Miscellaneous Parts to be Replaced, Monitor")


*Note: For (a) or (b) see "Miscellaneous Parts to be replaced (Monitor, (a) and (b), Pages 17 & 18. Check Q19, Q20 or IC1 first before Slam Boards.

TROUBLESHOOTING GUIDE (continued)

Removal of Main Printed Circuit Boards

CAUTION: Unplug the game first!

1. Unplug the game
2. Unlatch lid and lock in the full open position
3. Located on your left are the Main Printed Circuit Boards. Pull each of the four plugs out by depressing both release tabs and pulling straight out. Carefully take the two (2) upper corners and pull the boards straight up and out, lay the boards on the Display Tube (using a soft cloth covering the tube to prevent scratches from the Printed Circuit Boards), with the component sides facing upward (see Figures 2-2 and 2-3).
4. Fill out red repair tag and mail broken boards and repair tags to MIRCO.

MIRCO GAME REPAIR TAG USE ONE TAG PER ITEM TO BE REPAIRED	 MIRCO GAMES, INC. Manufacturers of Coin and Non-Coin Operated Amusement Games 1960 WEST NINTH LANE, PHOENIX, ARIZONA 85021 TELEPHONE: (602) 944-0578 ATTN: DAVE MASSEY CUSTOMER SERVICE
NAME <u>JOHN SMITH</u>	
ADDRESS <u>1408 THUR ST.</u>	
CITY-STATE <u>ANYWHERE, U.S.A.</u>	
P.O. BOX NO. <u>-0-</u> ZIP CODE <u>99009</u>	
FILL IN INFORMATION PERTINENT TO ITEM TO BE REPAIRED:	
GAME SERIAL NO. <u>430</u>	
MONITOR SERIAL NO. _____	
MONITOR PANEL BOARD SERIAL NO. _____	
SV-VS 102 POWER BOARD SERIAL NO. _____	
COMPUTER BOARD SERIAL NO. <u>1011-3700-#580</u>	
(FOR COMPUTER BOARDS - PLEASE IDENTIFY BY CHECKING ONE OF THE FOLLOWING):	
<input type="checkbox"/> 3500 <input checked="" type="checkbox"/> 3700 <input type="checkbox"/> 3701 <input type="checkbox"/> 3702 <input type="checkbox"/> _____ OTHER	
DESCRIPTION OF PROBLEM(S)	
<u>GAME WON'T RESET TO 0-0</u>	
<u>ON FREE GAME, GOES TO 10-0</u>	
<u>INSTEAD</u>	

PLEASE REQUEST ADDITIONAL SHEETS AS NEEDED; USE IN CONJUNCTION WITH MIRCO GAME ITEM TRANSFER TAG, IF NEEDED.	
RETURN, IN CARE OF <u>SAME</u>	

SAMPLE REPAIR TAG

Replacement of Main Printed Circuit Boards

Upon reinstallation of the Main Printed Circuit Board, make certain you slide it into the slots provided on either side of the game box interior. (see Figure 2-1)

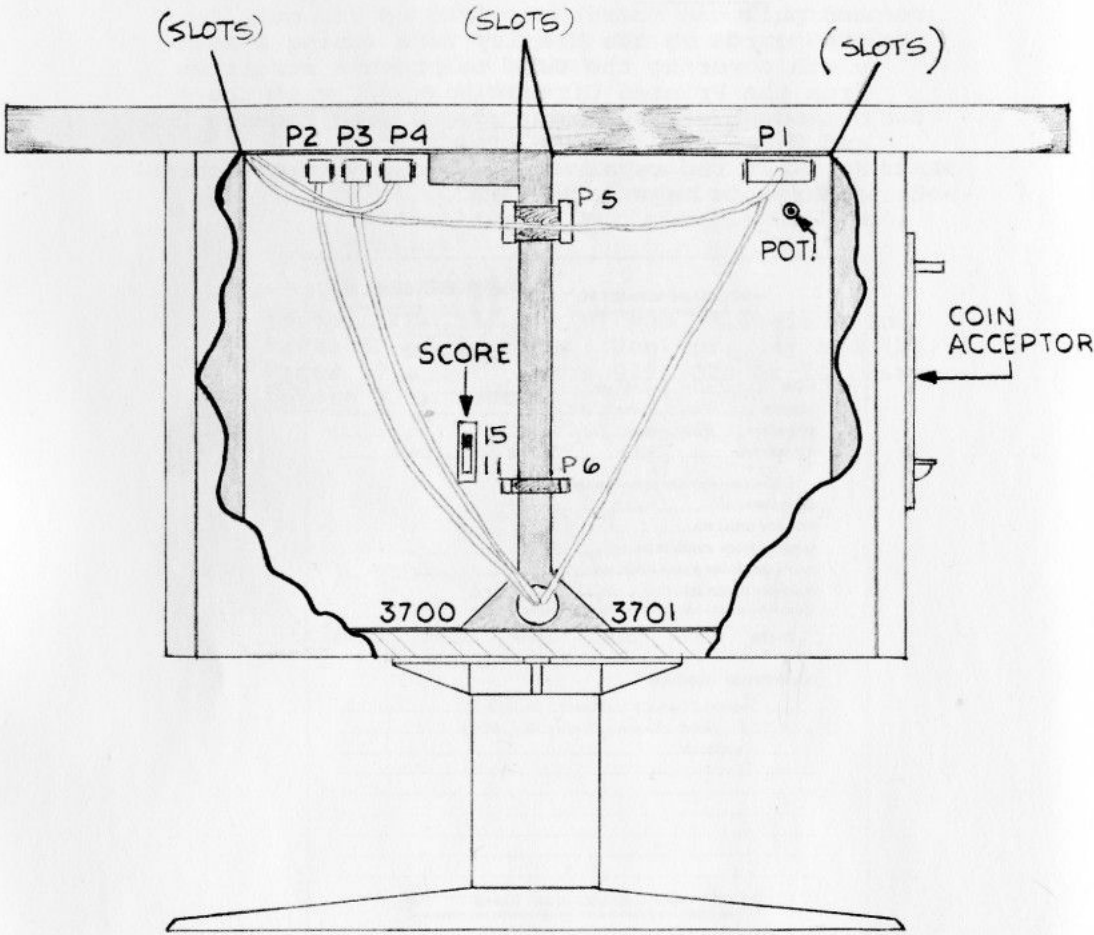
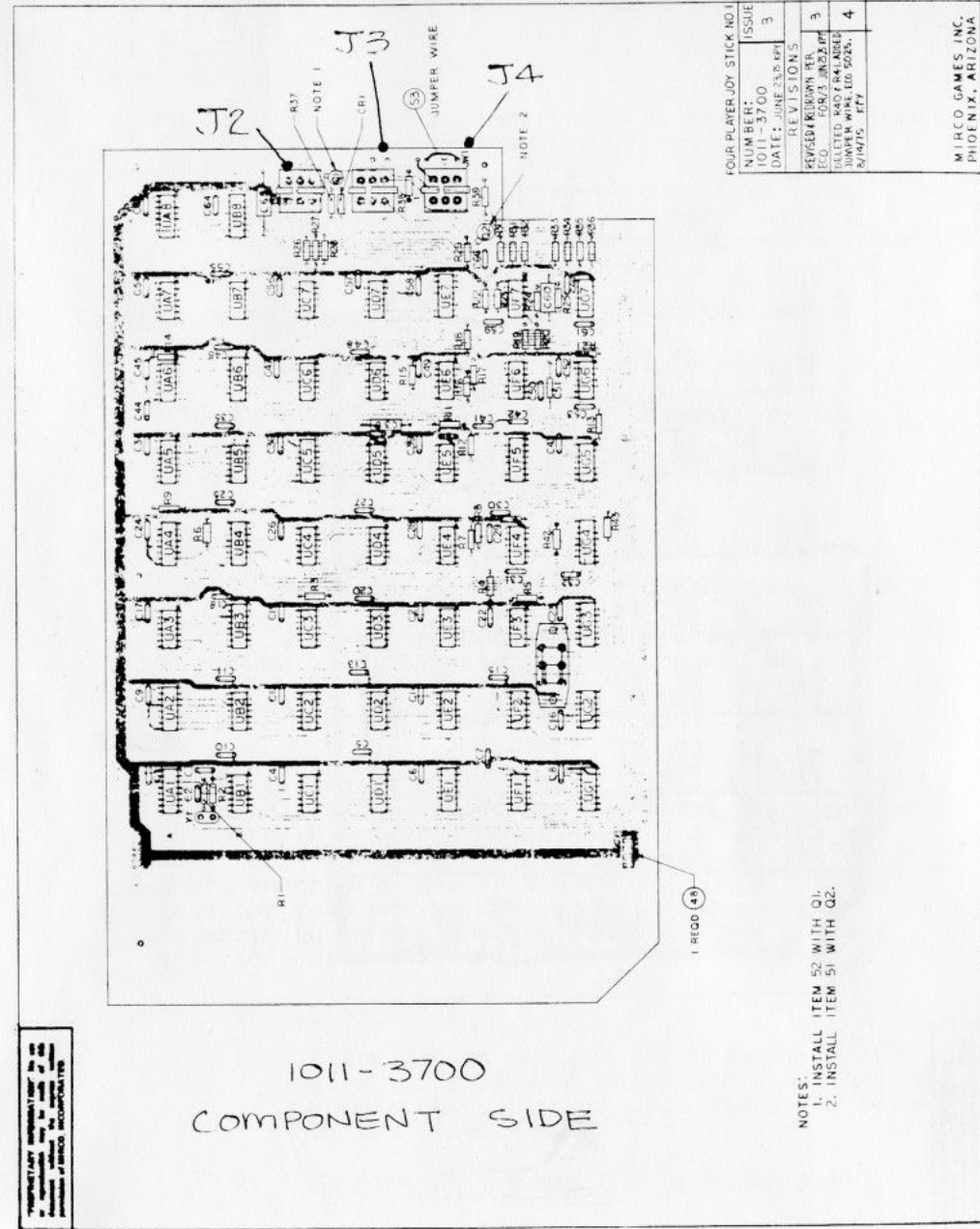


FIGURE 2-1



FOUR PLAYER JOY STICK NO.1	ISSUE
NUMBER: 1011-3700	3
DATE: JUNE 23, 1975	REVISIONS
REVISED DRAWING PER	3
ECO. COLLECTED BY F. M. LARSEN	4
JUMPER WIRE LOG 5025A	
2/19/75 PFF	

NOTES:
1. INSTALL ITEM 52 WITH Q1.
2. INSTALL ITEM 51 WITH Q2.

MIRCO GAMES, INC.
PHOENIX, ARIZONA

FIGURE 2-2

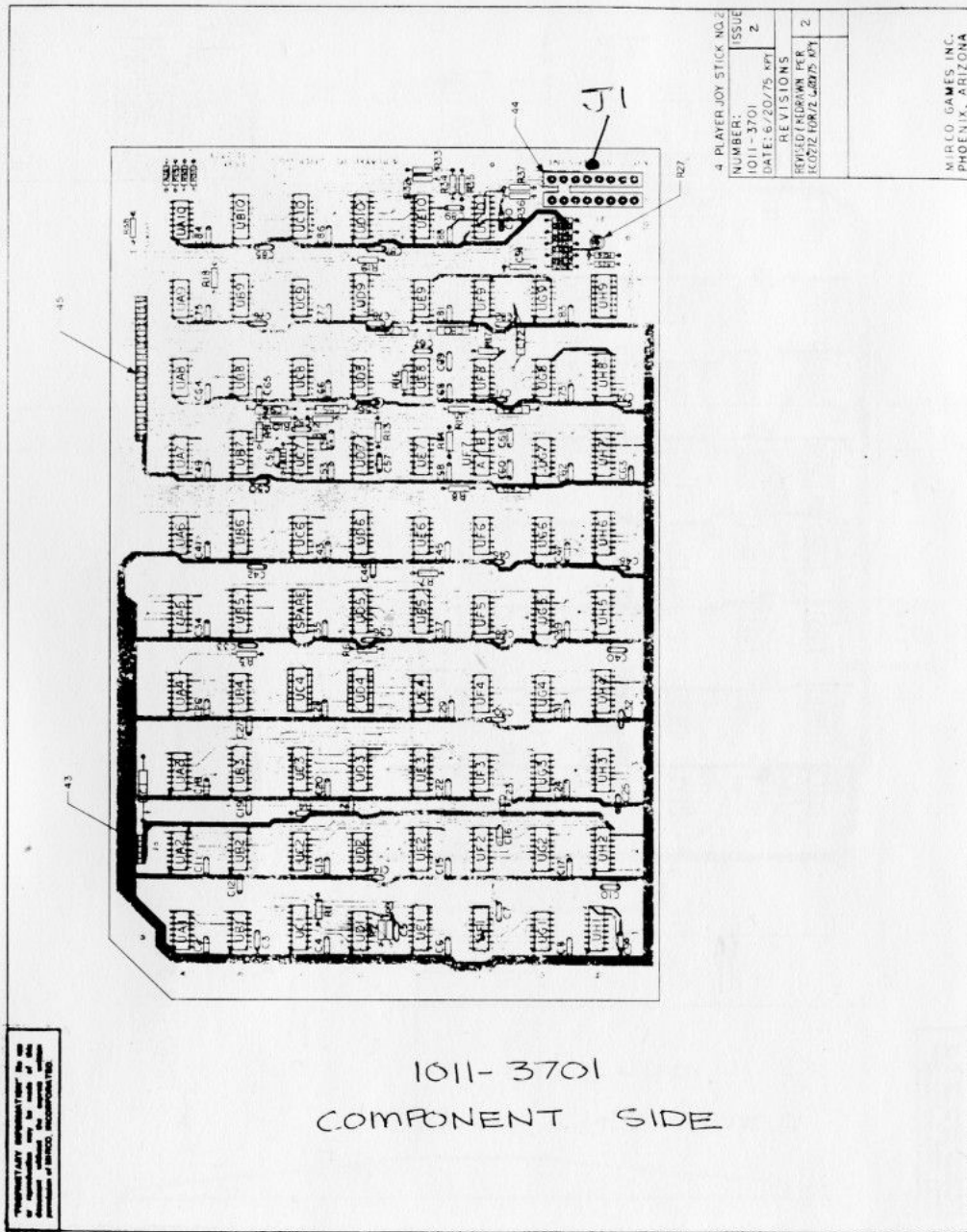


FIGURE 2-3

IV MISCELLANEOUS PARTS TO BE REPLACED OR REPAIRED
(if the following problems exist)

Player Mode Switch

1. If the wires are not loose or shorting, circuit boards are okay, but still:
 - a. Player versus Player is unobtainable
 - b. Player versus Game is unobtainable
 - c. Neither position will allow a game after money has been deposited

Control Potentiometers

1. If the wires are not loose or shorting, but:
 - a. Paddles move erratically to rotation of levers
 - b. Set screws may be loose on pots
 - c. Pots may need replacing

Start Button

1. If the wires are not loose or shorting, but:
 - a. Fails to start game after money has been deposited and switch has been depressed

Monitor

There are two boards in the monitor, a small plug-in 5V board located behind the big black transformer (henceforth referred to as the audio panel), and an 8" x 5½" board plugged into the chassis with a small bunch of wires from the same board plugged into the yoke of the picture tube (henceforth referred to as the monitor panel). (See Figures 3-1 and 3-2)

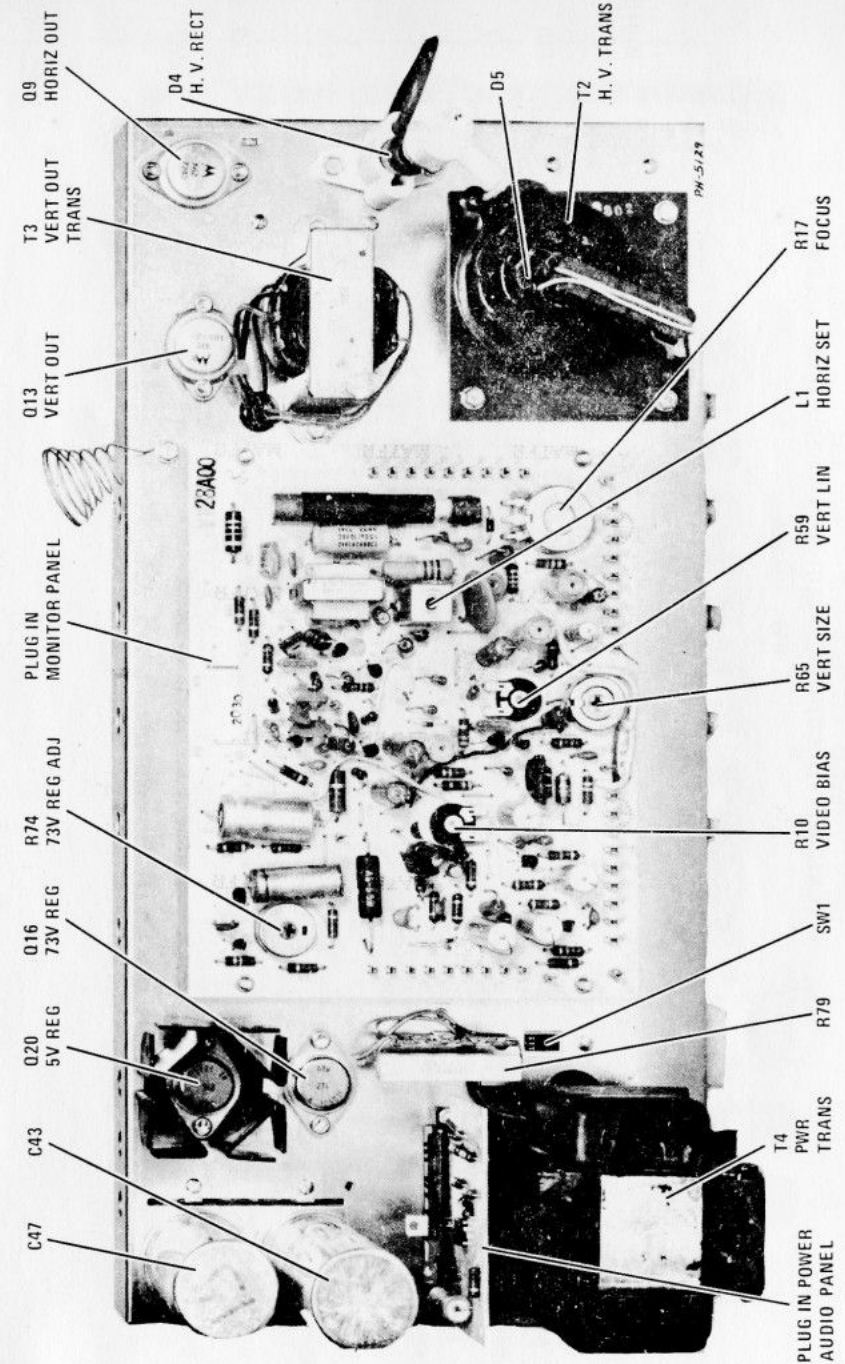
A. Monitor Chassis

1. A low 73V on monitor power supply will give you a reduced playfield (in size) or ripple throughout the playfield, or bars in the playfield.
2. No picture - check Q16 or audio panel
3. Contrast, brightness, verticle or horizontal holds, or volume is unadjustable or partially adjustable.

MISCELLANEOUS PARTS TO BE REPLACED (continued)

- B. Audio Panel (See Figure 3-3)
1. A low 5V output will produce snow or haze
 2. No picture or sound, check Q18, Q19, IC1 (or Q20 on chassis)
- C. Monitor Panel (See Figures 3-4 and 3-5)
1. Adjustments to this panel should be done only by a qualified serviceman
- D. C43 - Capacitor (See Figure 3-1)
1. If playfield has ripples or waves in it
- E. C47 - Capacitor (See Figure 3-1)
1. If dark lines move slowly and horizontally through the playfield
- F. Light Bulb
1. No sound, or weak sound (see Page, 31) Figures 3-2, Item E 1, also see Page, 31, #4)

VP12



Chassis Component Location Top View

FIGURE 3-1

SERVICE NOTES

PANEL REMOVAL/INSTALLATION

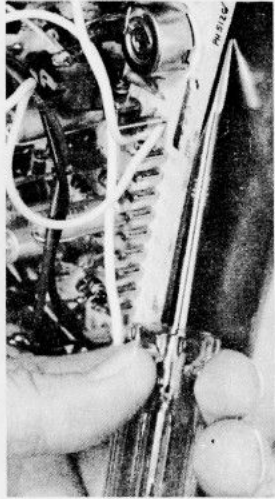


FIGURE 3-4

To prevent damage to the board or foil when removing the circuit panel it may be necessary to pry up slowly, IN STAGES around the edges as shown. Start at one corner and move all around the board keeping the screw driver tip against the chassis. When installing, apply pressure at the edges near the pins. Do not force down on the components.

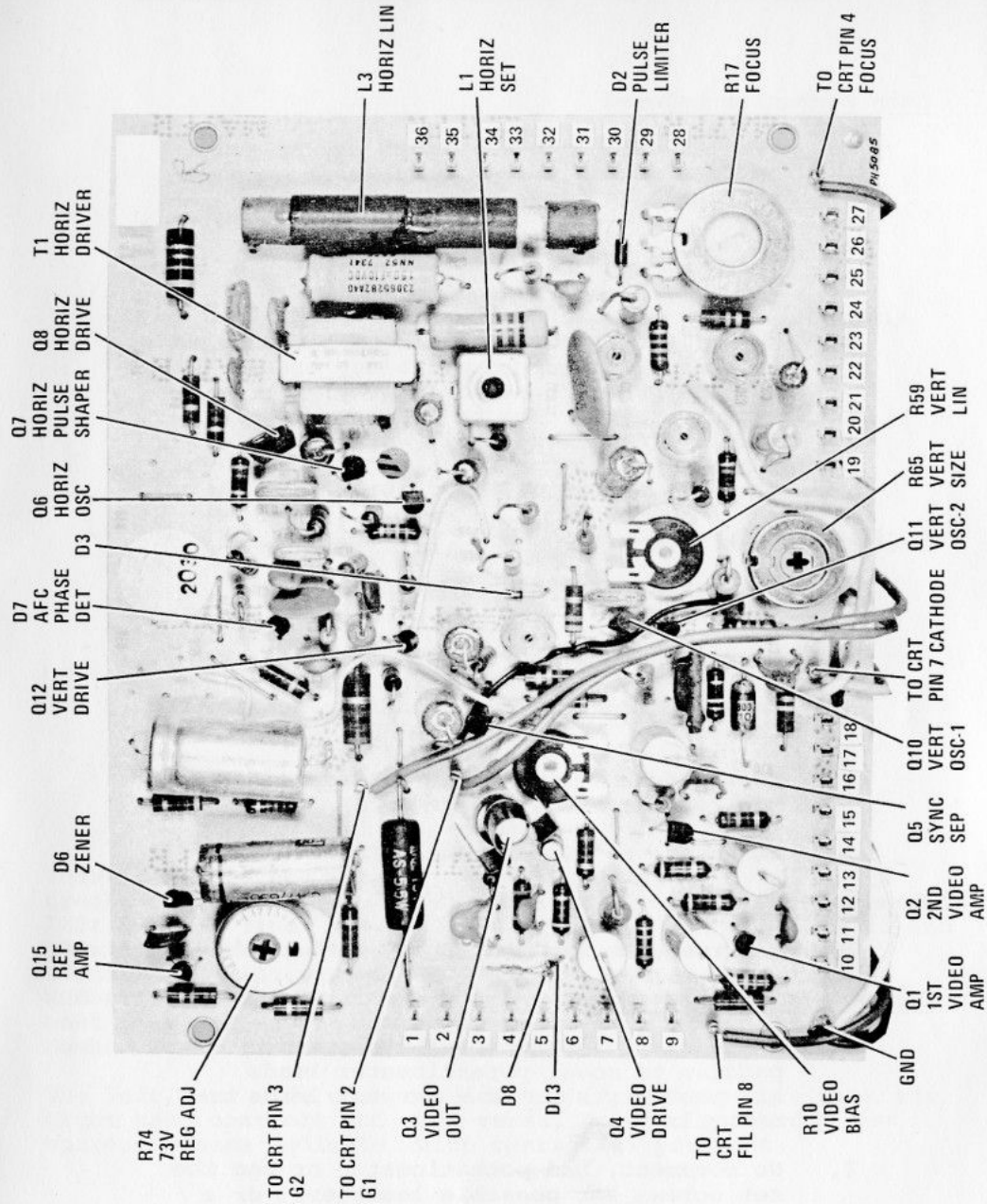


FIGURE 3-5

Coin Mechanism Related

1. Paddles don't appear, coins may be stuck in coin mechanism, or black wire on coin mechanism is loose.
2. Two paddles for two coins - check for loose wire on coin mechanism switch (blue or orange).
3. Two or four paddles appear on screen when game is first turned on: blue, orange, and black wires on the coin mechanism trip switch are shorting on coin box handle. Insulate coin box handle with electrical tape or put heat-shrinkable tubing on the contacts of the coin mechanism trip switch.

Audio Related

1. Score tone is fuzzy, may need speaker replacement.
2. Audio Panel may be failing (See Q18, Page 20)
3. Tone too loud or low, adjust on Monitor Chassis
4. No sound, see light bulb on underside of Monitor Chassis. (see Page 20)
5. No sound, see Q18 on Audio Panel

Free Game Related

1. No free game light, LED may be burned out.

Control Lever Related

1. Rotation of lever causes two or more paddles to move, potentiometer leads are probably shorted - inspect leads on controls.
2. No movement, bad potentiometer or see the set screws for possible looseness, or a wire may be broken (see Page 25)

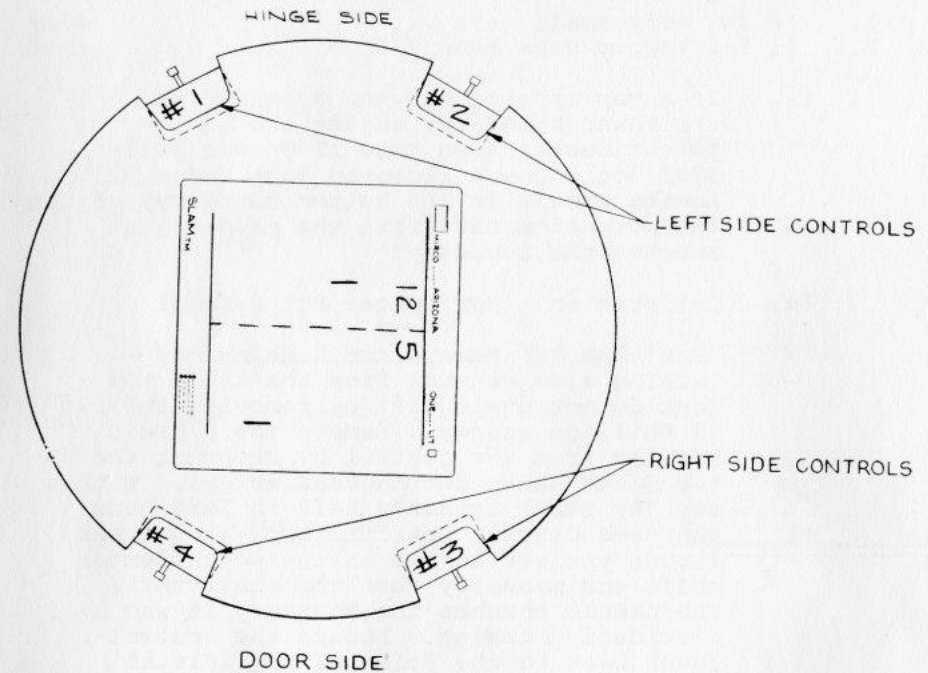


Figure 4-1
(top view)

These controls are wired in series. Therefore, if a wire breaks on any control, it will affect the rest of the controls left in that line; i.e., a wire breaks on #2, controls #3 and #4 will probably not operate horizontally or vertically. (Control #2 also may not work if two wires are broken.) Number 1 and #3 controls are your 25¢ controls, they get the most play and may be the major cause of control problems. Number 2 and #4 are your 50¢ controls.

The left hand side controls are not interchangeable with the right hand controls and vice versa, so when you order any spares, please indicate which control(s) you want.

Paddle Adjustment (against boundary)

1. Is for very small gaps
 2. Is for larger gaps than 1/8"
- 1a. If a gap appears between a paddle and the lower boundary, adjust the 10k potentiometer (see Page 27 on the 1011-3701 logic board (located just under P1). Locate paddle to the bottom boundary, adjust the potentiometer until the paddle just touches the boundary.

2a. Calibration - Horizontal Pot Control

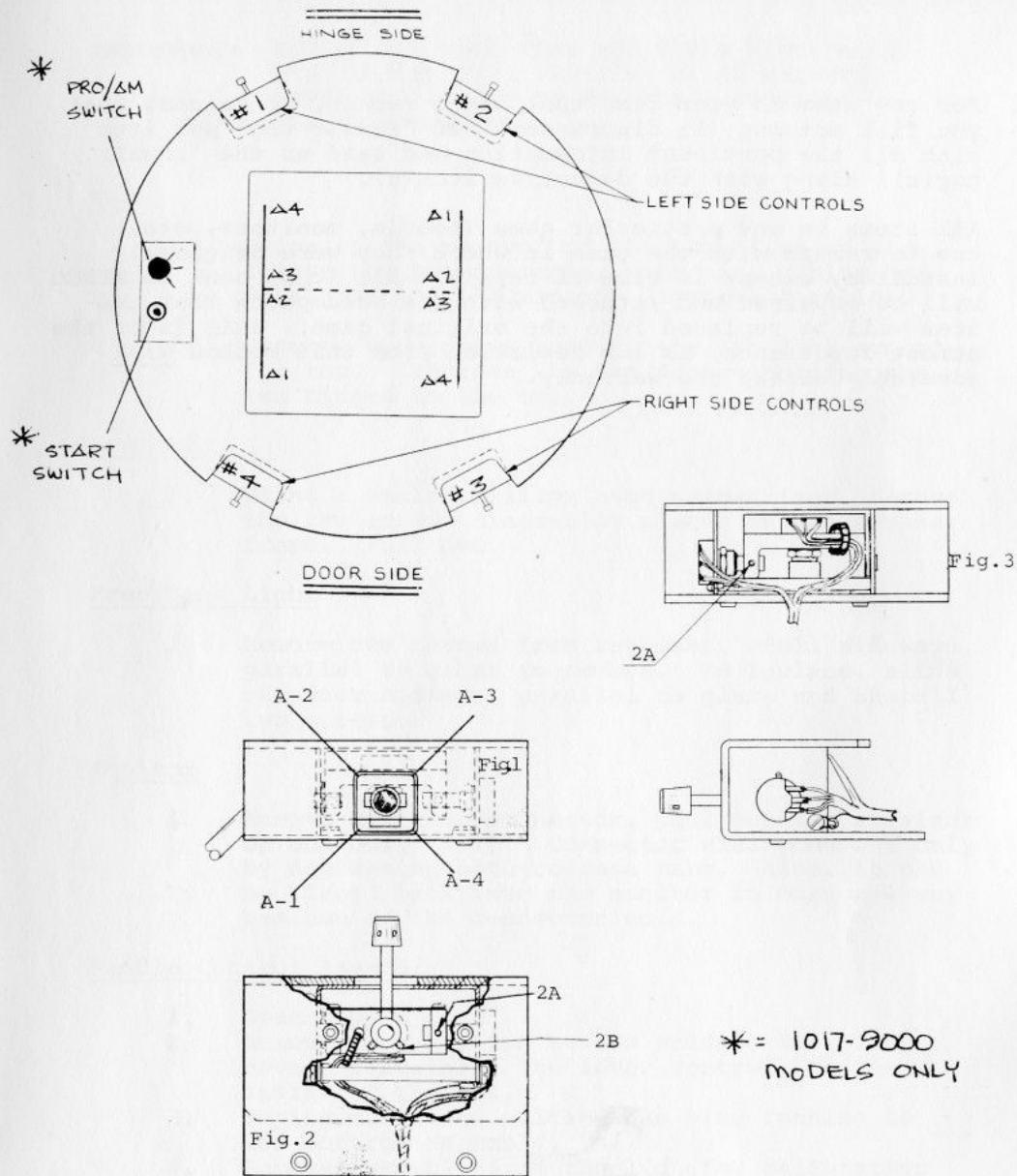
(See Page 27) Remove the housing containing slam control from the table top (but do not unplug it) by removing the two #2 Phillips screws. Remove the plastic housing from the control by removing the two 5/64" Allen Button Head screws. With the joy stick assembly held in left hand and game display set for four (4) players, loosen the set screws on the potentiometer shaft and manually turn the shaft until the paddle touches the boundary it was previously missing. Locate the control lever back to the point of the initial problem and tighten the set screws; i.e., #4 paddle was against the bottom boundary and up at the net (A-2 on Page 27) After adjustment of the pot shaft, push the lever up to A-2 and tighten set screws. Move the paddle around the court to see if it now hits all boundaries. Repeat as necessary.

2b. Calibration - Vertical Pot Control

The procedure is the same as horizontal except for the following:

10k pot on the 3701 board should be set to midway point before starting its calibration

10k pot is used to add to or subtract from the visual to mechanical balance



VI REPLACEMENT OF ANY ITEM IN THE GAME

For any item in your game that needs repair, we request that you fill out one (1) fluorescent red 'repair tag' per item with all the pertinent information and send us the 'repair tag(s)' along with the defective item(s).

All items in any particular game (boards, monitors, etc.) are to remain with the game in which they were originally installed, except in time of repair. All items sent to MIRCO will be repaired and returned with the assumption that the item will be replaced into the original game. This is of the utmost importance, as any deviation from this method will adversely affect the warranty.

VII REMOVAL OF PARTS

IMPORTANT: UNPLUG THE GAME FROM THE POWER RECEPTACLE DURING CLEANING, INSPECTION, OR WHENEVER REPLACING A PART TO PREVENT A POSSIBLE ELECTRICAL SHOCK

Top

1. Prior to the removal of the top, open up and remove the potentiometer controls, cables and free game and illumination lamps and cables.
2. Unscrew two screws holding the lid lock-arm to the top. Unscrews the ten screws holding the two hinges to the top.

Speaker

1. Using a small Phillips head screwdriver, remove the two screws diagonally placed on the speaker frame. Pull out.

Free Game Light

1. Remove two screws from retainer. Pull sideways, parallel to glass to remove. To replace, slide retainer sideways, parallel to glass and install two screws.

Monitor

1. Remove MP4 wire connector, pull monitor straight up and out. NOTE: Connector will come out only by depressing both release tabs. Also, it can be placed back into the monitor in only one way because of the connector mold.

Paddle Control Assembly

1. Open top
2. Remove two Phillips screws holding the black cover (containing the lever control) to the inside of the top.
3. Unplug the green multi-cable plug running to the control assembly.
4. Remove assembly from the lid (for calibration of control lever, see Page 26).

Illumination Lamps

1. For coin mechanism, remove plate inside the lid held on by two wood screws.

Game Mode Rotary Switch

1. Loosen nut holding switch to top
2. Push switch down or in and remove from inside
3. Separate switch from ground braid
4. Exchange wires from old switch to new switch one for one. If new switch is not available, mark location for reinstallation
5. Insert switch through ground braid, and place in panel
6. Install lock washer over switch and tighten nut (do not allow body of switch to rotate as nut is turned)

Start Switch

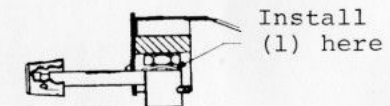
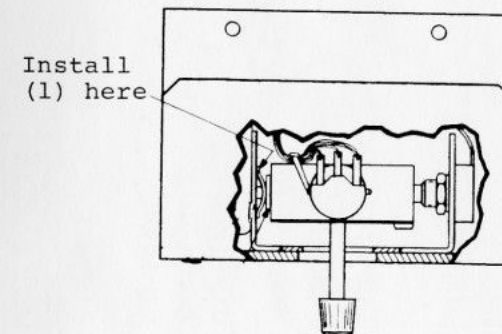
1. Twist switch body (under top) approximately 180° and pull down
2. Remove wires from switch terminals and connect to new switch one for one
3. Position switch in top
4. Twist switch body approximately 180° onto tab hanging down from the underside of the top. Let go of switch and it should be connected

Coin Mechanism

1. Remove ground braid from rear of frame
2. Remove mounting screws
3. Pull harness through front of door and change wires one for one to new mechanism
4. Connect wires to switch and position mechanism in door
5. Bolt in place and connect ground braid to rear of frame
6. Turn power on and check operation

1. A coin counter can be installed by connecting two purple wires lying by the speaker with butt-connectors on them, to either lead of the optional coin counter. Secure coin counter in an upright position on the floor left of the white pushbutton interlock switch.
2. "Brightness" should be kept in the Off position (extreme counterclock wise) on the monitor. Use the control as illustrated in Figure 1-1. Bring the picture into focus using the contrast control (Figure 1-1). This process will increase the life of your tube.
3. Player versus Game is in Pro mode, for Am insert quarters as usual, push "Push to Start" switch, turn mode switch to Am. This will give you double paddle size and slower speed.
4. E1 (Page , Figure 3-2) is a light bulb. For speaker protection, if this is burned out, you will get no sound. (It is normally "Off", only during tones does the bulb light up.)
5. To tighten control movement, install (2) wave washers per control. Part Number 7150-2501.

Eight (8) washers are needed per game, one set (8) price is \$.50.



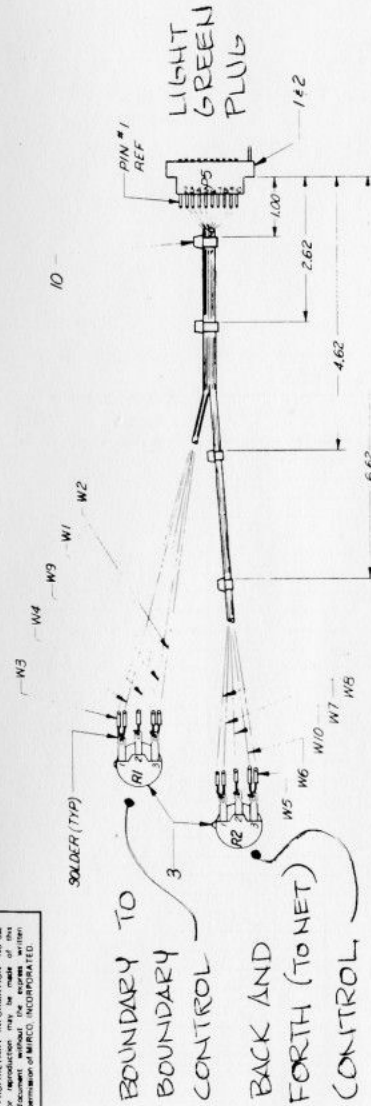
ADDITIONAL INFORMATION (continued)

Standard Repair Prices for Out of Warranty Games

Item	Description	Cost
1011-3700	8 Grid- Logic P.C. Board	\$ 25.00
1011-3701	10 Grid- Logic P.C. Board	25.00
1011-3000	Slam Control Assembly	10.00
1011-0001	Monitor Panel P.C. Board	25.00
1011-0002	5 Volt Monitor P.C. Board	15.00
1011-XM501-10	Monitor	45.00

Shipping is to be paid both ways by the customer. This list of items and repair costs is subject to change without prior notification by MIRCO GAMES.

PROPRIETARY INFORMATION: No use or reproduction may be made of this document without the express written permission of MIRCO INCORPORATED.



WIRE LIST

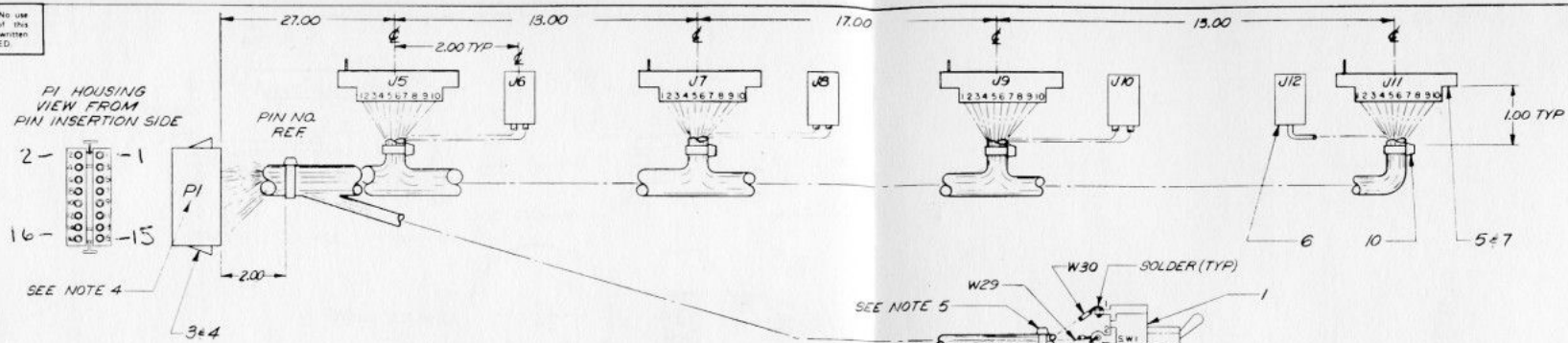
WIRE NO.	COLOR	LENGTH ±.12	FROM	TO	FUNCTION
1	WHT/BK	10.00	P5-10	R1-3	HP-
2	WHT/BK	10.00	P5-9	R1-5	HP-
3	WHT/RD	10.00	P5-8	R1-1	HP+
4	WHT/RD	10.00	P5-7	R1-1	HP+
5	RED	11.00	P5-6	R2-3	VP+
6	RED	11.00	P5-5	R2-3	VP+
7	BLACK	11.00	P5-4	R2-1	VP-
8	BLACK	11.00	P5-3	R2-1	VP-
9	YELLOW	10.00	P5-2	R1-2	VL
10	ORANGE	11.00	P5-1	R2-2	HL

- NOTES:
1. STRIP ALL WIRES .12 AT POT END, STRIP ALL WIRES .12 AT CONN. END.
 2. WIRE LENGTHS ARE ACTUAL DIMENSIONS BEFORE STRIPPING.
 3. SCALE: NONE
 4. TOL: .XX ±.03

CABLE ASSY,
JOY STICK
NUMBER 1011-0206
DATE 4/10/79 (C.M.)
REVISED 5-0 N
SUTTS

MIRCO GAMES, INC
PHOENIX, ARIZONA

"PROPRIETARY INFORMATION" No use or reproduction may be made of this document without the express written permission of MIRCO, INCORPORATED.



WIRE LIST

WIRE NO.	COLOR	LENGTH ±.12	FROM	TO	FUNCTION
1	WHT/RED	28.00	PI-4	J5-7	HP+
2	WHT/RED	15.00	J5-8	J7-7	HP+
3	WHT/RED	19.00	J7-8	J9-9	HP+
4	WHT/RED	15.00	J9-10	J11-10	HP+
5	WHT/BLK	28.00	PI-16	J5-9	HP-
6	WHT/BLK	15.00	J5-10	J7-9	HP-
7	WHT/BLK	19.00	J7-10	J9-7	HP-
8	WHT/BLK	15.00	J9-8	J11-8	HP-
9	RED	28.00	PI-2	J5-5	VP+
10	RED	15.00	J5-6	J7-6	VP+
11	RED	19.00	J7-5	J9-3	VP+
12	RED	15.00	J9-4	J11-4	VP+
13	BLACK	28.00	PI-14	J5-3	VP-
14	BLACK	15.00	J5-4	J7-4	VP-
15	BLACK	19.00	J7-3	J9-5	VP-
16	BLACK	15.00	J9-6	J11-6	VP-
17	WHT/ORG	28.00	PI-11	J5-1	HL
18	ORANGE	28.00	PI-6	J5-2	VL
19	WHT/BRN	41.00	PI-9	J7-1	HLM
20	BROWN	41.00	PI-8	J7-2	VLM
21	WHT/YEL	58.00	PI-7	J9-1	HR
22	YELLOW	58.00	PI-10	J9-2	VR
23	WHT/GRN	71.00	PI-1	J11-1	HRM
24	GREEN	71.00	PI-12	J11-2	VRM
*25	BLACK	28.00	PI-15	J6	GND
26	BLACK	15.00	J6	J8	GND
27	BLACK	19.00	J8	J10	GND
28	BLACK	15.00	J10	J12	GND
*29	BLACK	80.00	PI-15	SW1-2	GND
30	WHITE	80.00	PI-5	SW1-1	PLAYER VS GAME
31	VIOLET	80.00	PI-3	SW1-3	PLAYER VS PLAYER
32	GRAY	83.00	PI-13	SW2-2	N.O.
33	BLACK	3.00	SW1-2	SW2-1	GND
34	BLACK	4.00	SW2-1	TERM	GND
35	BLACK	4.00	TERM	TERM	GND

NOTES:

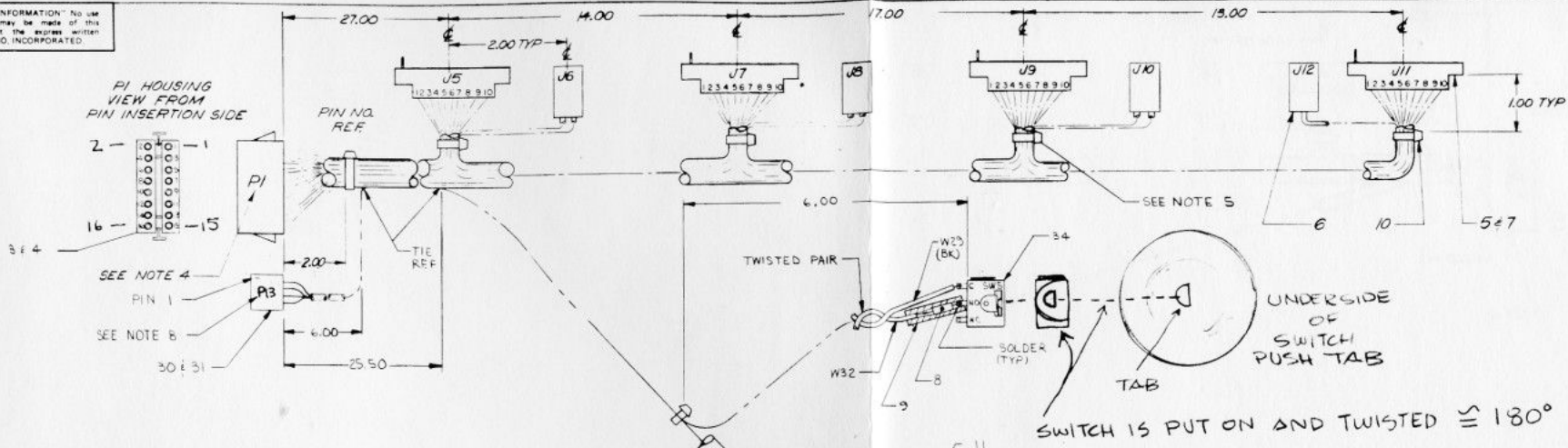
1. STRIP ALL WIRES .18 EXCEPT J5, J7, J9 AND J11.
2. WIRE LENGTHS ARE ACTUAL DIMENSIONS BEFORE STRIPPING.
- * 3. W25 & W29 ARE TWO WIRES CRIMPED ON ONE CONTACT PIN.
4. MARK "PI" ON HOUSING WITH INDELIBLE INK, APPROX. AS SHOWN.
5. INSTALL CABLE TIES AS REQ'D.
6. STRIP ALL WIRES .12 FOR J5, J7, J9 AND J11.
7. SCALE: NONE

ORIGINAL
JOY STICK
CONTROL CABLE

NUMBER 1011-0202	ISSUE 1
DATE: 4/17/75/CM	
REVISION	
RELEASED TO MFG. 4/17/75 JLM	

MIRCO GAMES, INC.
PHOENIX, ARIZONA

"PROPRIETARY INFORMATION" No use or reproduction may be made of this document without the express written permission of MIRCO, INCORPORATED.



WIRE LIST

WIRE NO.	COLOR	LENGTH ±.12	FROM	TO	FUNCTION
1	WHT/RED	28.50	PI-4	J5-7	HP+
2	WHT/RED	16.00	J5-8	J7-7	HP+
3	WHT/RED	19.00	J7-8	J9-9	HP+
4	WHT/RED	15.00	J9-10	J11-10	HP+
5	WHT/BLK	28.50	PI-16	J5-9	HP-
6	WHT/BLK	16.00	J5-10	J7-9	HP-
7	WHT/BLK	19.00	J7-10	J9-7	HP-
8	WHT/BLK	15.00	J9-8	J11-8	HP-
9	RED	28.50	PI-2	J5-5	VP+
10	RED	16.00	J5-6	J7-6	VP+
11	RED	19.00	J7-5	J9-3	VP+
12	RED	15.00	J9-4	J11-4	VP+
13	BLACK	28.50	PI-14	J5-3	VP-
14	BLACK	16.00	J5-4	J7-4	VP-
15	BLACK	19.00	J7-3	J9-5	VP-
16	BLACK	15.00	J9-6	J11-6	VP-
17	WHT/ORG	28.50	PI-11	J5-1	HL
18	ORANGE	28.50	PI-6	J5-2	VL
19	WHT/BRN	42.00	PI-9	J7-1	HLM
20	BROWN	42.00	PI-8	J7-2	VLM
21	WHT/YEL	59.00	PI-7	J9-1	HR
22	YELLOW	59.00	PI-10	J9-2	VR
23	WHT/GRN	72.00	PI-1	J11-1	HRM
24	GREEN	72.00	PI-12	J11-2	VRM
*25	BLACK	29.00	PI-15	J6	GND
26	BLACK	16.00	J6	J8	GND
27	BLACK	19.00	J8	J10	GND
28	BLACK	15.00	J10	J12	GND
*29	BLACK	44.00	PI-15	SW5-C	GND
30	WHITE	36.00	PI-5	SW3-B	PLAYER VS GAME
31	VIOLET	36.00	PI-3	SW3-1	PLAYER VS PLAYER
32	GRAY	44.00	PI-13	SW5-N.O.	N.O.
33	BLACK	5.00	SW1-2	SW2-1	GND
34	BLACK	4.00	SW1-1	TERM	GND
35	BLACK	4.00	TERM	TERM	GND
36	BLACK	38.00	PI3-4	SW3-C	GND
37	BLUE	38.00	PI3-1	SW4-2	VS GAME/L
38	WH/GY	38.00	PI3-2	SW4-1	PRO/AM OUT
39	WH/BL	38.00	PI3-3	SW4-C	PLAYER VS GAME

NOTES:

1. STRIP ALL WIRES .12 EXCEPT J5, J7, J9 AND J11.
2. WIRE LENGTHS ARE ACTUAL DIMENSIONS BEFORE STRIPPING.
3. W25 + W29 ARE TWO WIRES CRIMPED ON ONE CONTACT PIN.
4. MARK "PI" ON HOUSING WITH INDELIBLE INK, APPROX. AS SHOWN.
5. INSTALL CABLE TIES AS REQ'D.
6. STRIP ALL WIRES .12 FOR J5, J7, J9 AND J11.
7. SCALE: NONE
8. MARK "PI3" AS SHOWN WITH INDELIBLE INK.

WIRE LIST

WIRE NO	COLOR	LENGTHS ±.12	FROM	TO	FUNCTION
40	BLACK	.50	SW3-2	SW3-3	JUMPER
41	BLACK	.75	SW4-1	SW4-3	JUMPER
42	BLACK	2.00	SW3-C	SOLDER LUG	GND

PRO/AM MODIFIED

JOY STICK CONTROL CABLE

NUMBER 1017-0202 ISSUE 7

DATE: 4/17/75/CM

REVISION RELEASED TO MFG. 4/17/75 JLM 1

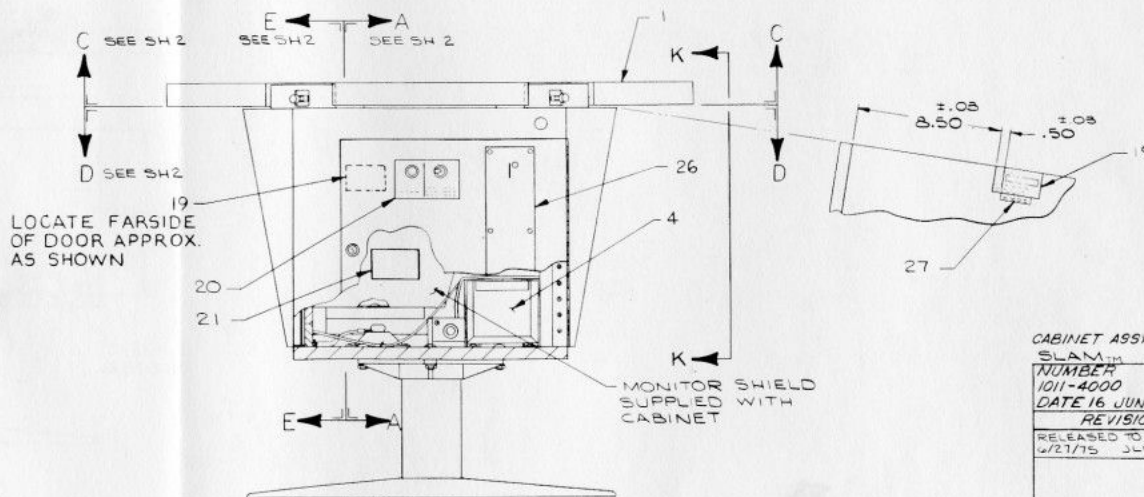
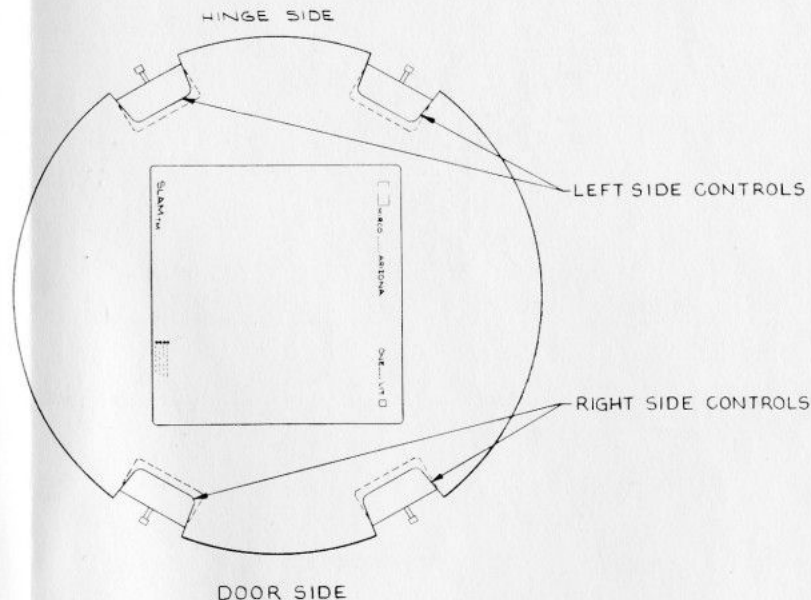
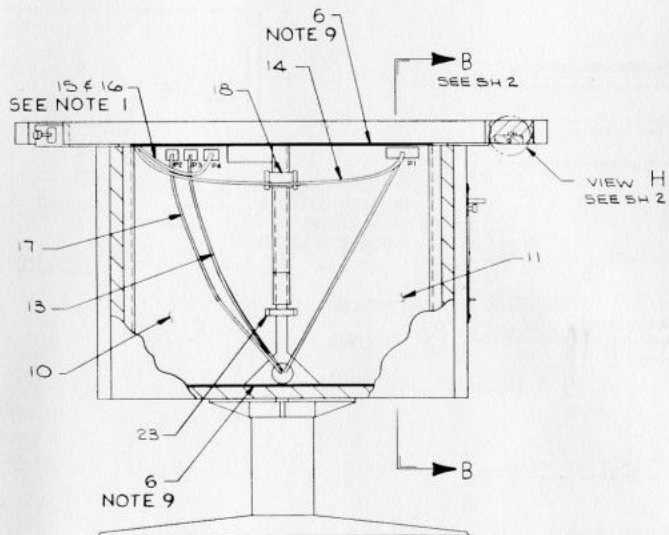
REPLACES 1011-0202 (PRICE IS THE SAME)

MIRCO GAMES, INC. PHOENIX, ARIZONA

"PROPRIETARY INFORMATION" No use or reproduction may be made of this document without the express written permission of MIRCO, INCORPORATED.

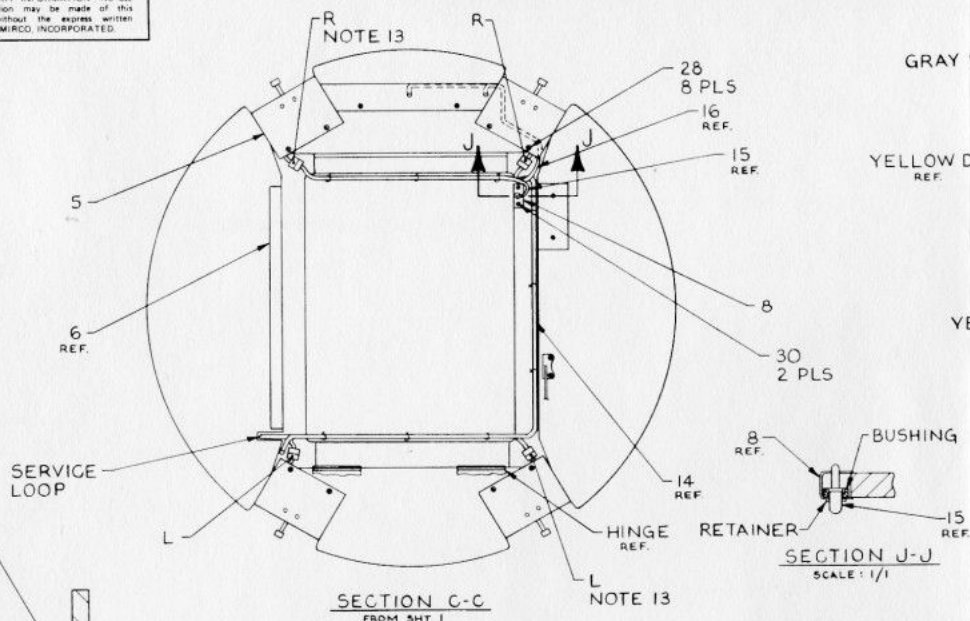
NOTES:

1. LED CABLE ASSY. (ITEM 16) CONTACTS TO BE INSERTED INTO P4 HOUSING (ITEM 15) AS FOLLOWS: BLK WIRE TO P4-1, BLK WIRE TO P4-3 AND RED WIRE TO P4-2.
2. WHEN MOUNTING LEDS (VIEW H) (ITEM 15), PUSH LEDS THRU HOLES AFTER ADDING BUSHING AND RETAINER. BEND LEADS TO FIT ROUTING. **CAUTION:** LEADS ARE BRITTLE, CARE MUST BE TAKEN.
3. TO MOUNT INTERLOCK ASSY. (ITEM 9), SLIDE REAR OF COVER UNDER PRE-ADJUSTED SCREWS (AS SHOWN IN SECTION D-D) AND MOUNT FRONT USING ACCESS HOLES.
4. IF COIN COUNTER OPTION IS USED, CRIMP TWO BUTT CONNECTORS (VIO WIRES) TO BLK WIRES ON COUNTER. MOUNT COUNTER TO WALL OF CABINET USING TWO NO. 8 SHEET METAL SCREWS, 1/2 LONG.
5. ITEM 24 MUST BE TIGHT AGAINST INTERLOCK SWITCH. TERMINAL CANNOT BE EXPOSED.
6. INSTALL CABLES APPROX. AS SHOWN AND FASTEN IN PLACE WITH TIES (ITEM 22). STAPLE TIES TO CABINET.
7. DO NOT TRAP WIRES BETWEEN CABINET AND DOOR.
8. PLACE ITEMS 38 AND 39 IN COIN BOX PRIOR TO SHIPPING.
9. CUT ITEM 6 IN 18 INCH LENGTHS AND STICK TO ITEM 1 AS SHOWN.
10. MOUNT THE GROUND TERMINALS IN BETWEEN THE SWITCHES AND THE DOOR.
11. CUT ITEM 7 IN 1 INCH LENGTHS AND STICK TO ITEM 12 AS SHOWN.
12. FINAL ADJUSTMENT OF THESE CONTROLS SHALL BE DONE IN THE FIELD.
13. JOY STICK CONNECTORS SHALL BE MARKED RIGHT OR LEFT SIDE AT SUB ASSY. LEVEL.
14. SCALE: 1/4

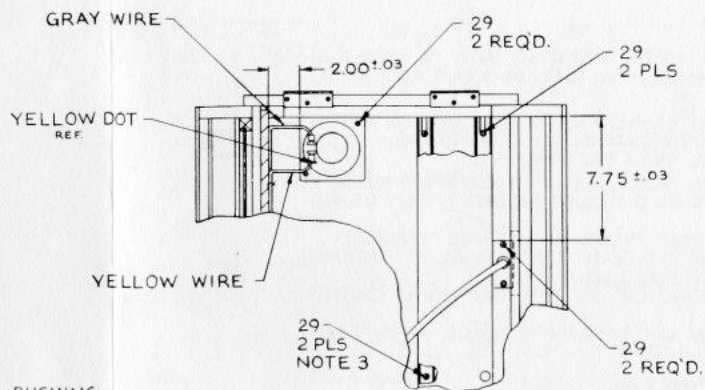


CABINET ASSY.	
SLAN	
NUMBER	ISSUE
1011-4000	1
DATE 16 JUNE JLM	
REVISION	
6/27/75	JLM
	1
MIRCO GAMES, INC. PHOENIX, ARIZONA	
SHEET 1 OF 2	

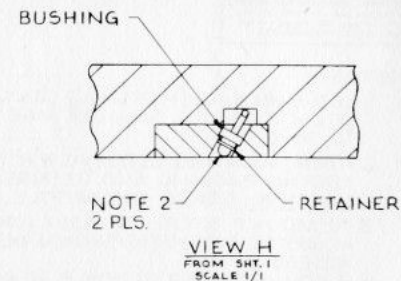
PROPRIETARY INFORMATION: No use or reproduction may be made of this document without the express written permission of MICO, INCORPORATED.



SECTION C-C
FROM SHT. 1



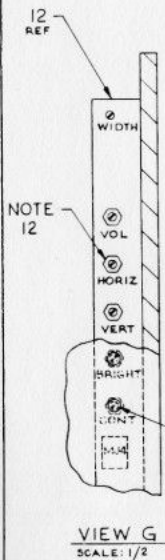
PARTIAL SECTION D-D
FROM SHT. 1



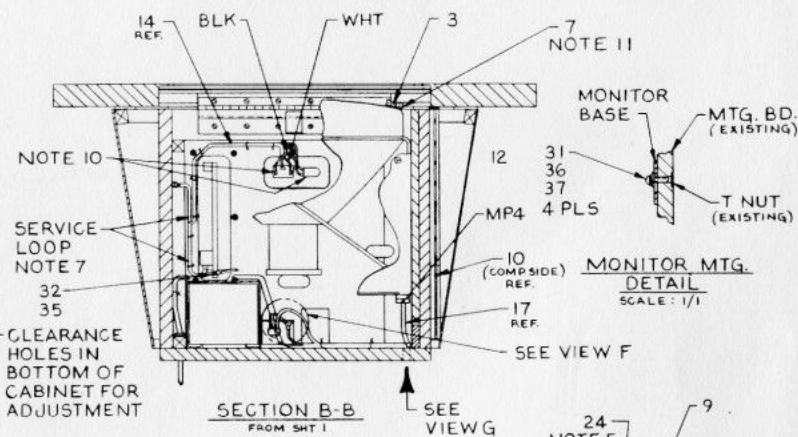
VIEW H
FROM SHT. 1
SCALE 1/1



PARTIAL SECTION E-E
FROM SHT. 1

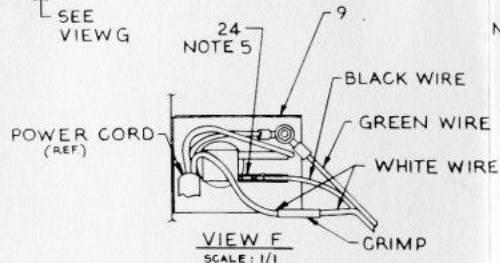


VIEW G
SCALE: 1/2

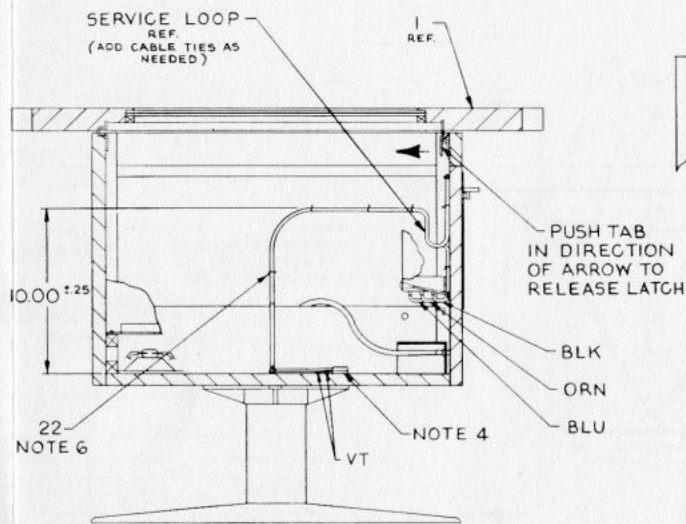


SECTION B-B
FROM SHT. 1

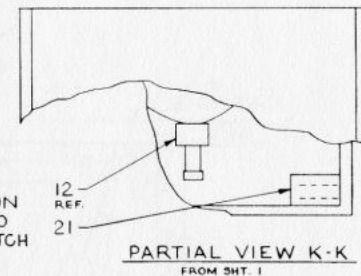
MONITOR MTG. DETAIL
SCALE: 1/1



VIEW F
SCALE: 1/1



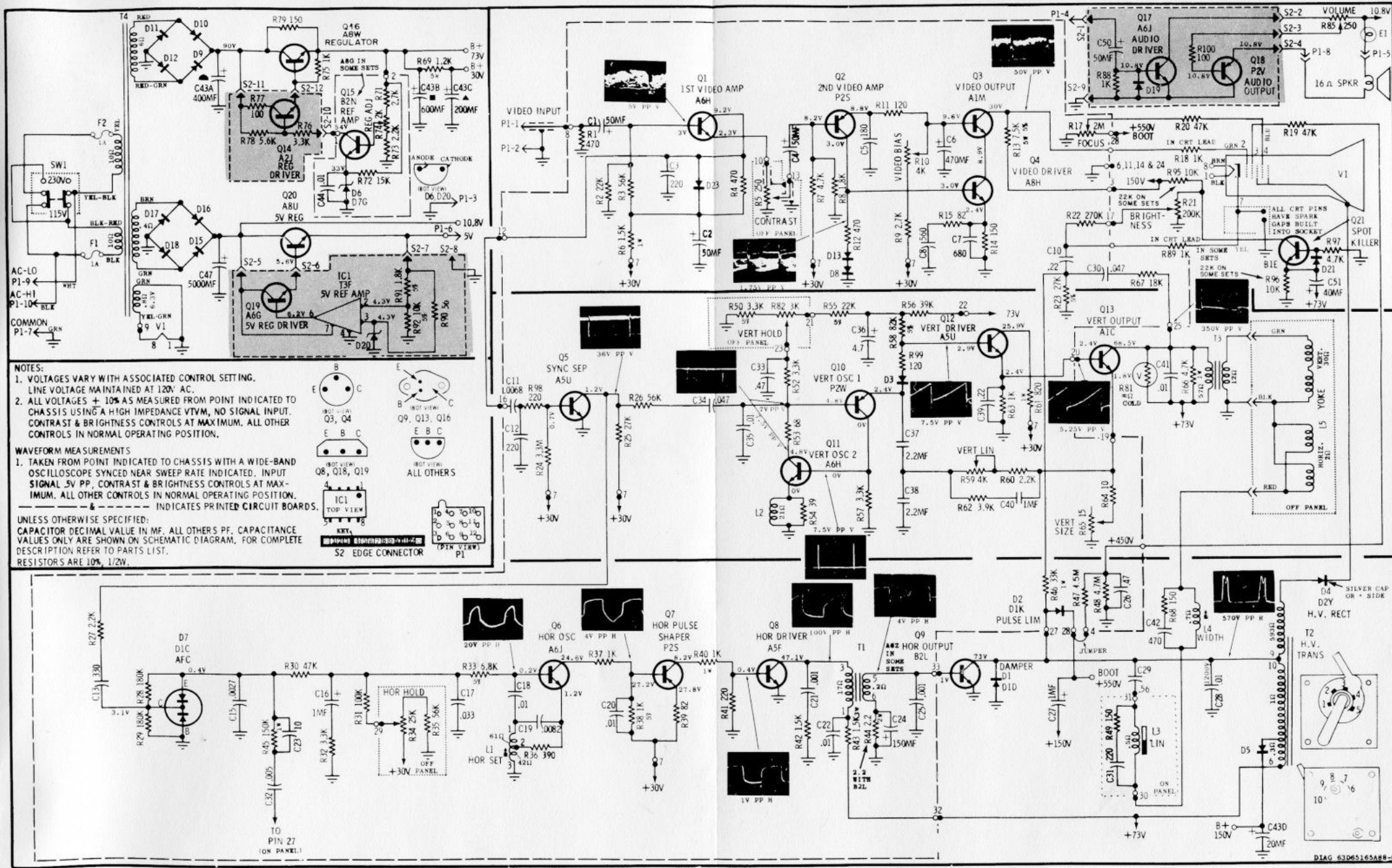
SECTION A-A
FROM SHT. 1



PARTIAL VIEW K-K
FROM SHT. 1

CABINET ASSY,
SLAM™
NUMBER 1011-4000 ISSUE 1
DATE 16 JUNE JLM
REVISION
RELEASED TO MFG 6/27/75 JLM 1

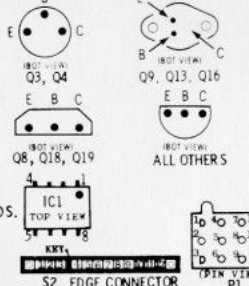
MICO GAMES, INC.
PHOENIX, ARIZONA
SHEET 2 OF 2



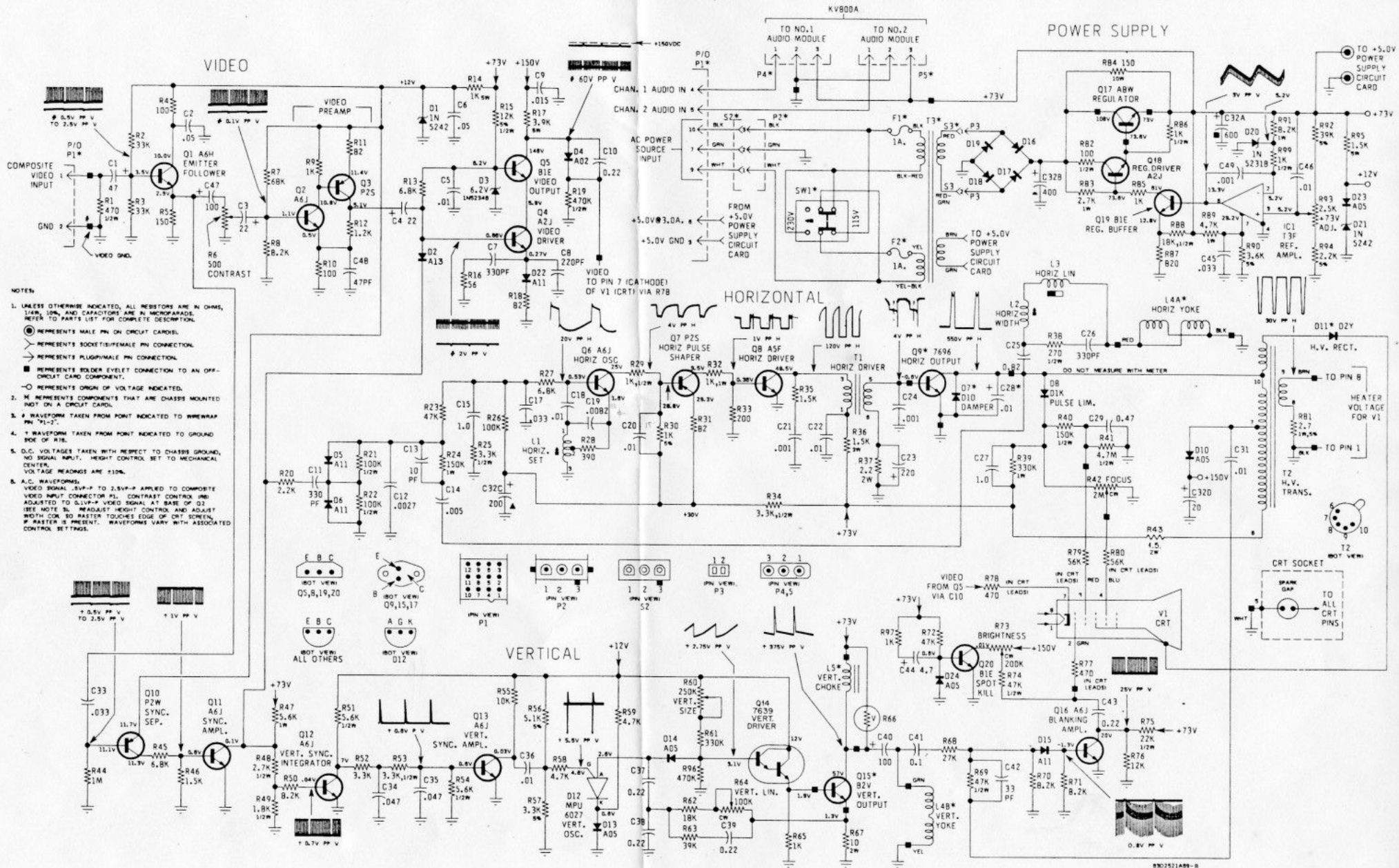
NOTES:
 1. VOLTAGES VARY WITH A ASSOCIATED CONTROL SETTING. LINE VOLTAGE MAINTAINED AT 120V AC.
 2. ALL VOLTAGES $\pm 10\%$ AS MEASURED FROM POINT INDICATED TO CHASSIS USING A HIGH IMPEDANCE VTVM, NO SIGNAL INPUT. CONTRAST & BRIGHTNESS CONTROLS AT MAXIMUM. ALL OTHER CONTROLS IN NORMAL OPERATING POSITION.

WAVEFORM MEASUREMENTS
 1. TAKEN FROM POINT INDICATED TO CHASSIS WITH A WIDE-BAND OSCILLOSCOPE SYNCED NEAR SWEEP RATE INDICATED. INPUT SIGNAL .5V PP. CONTRAST & BRIGHTNESS CONTROLS AT MAXIMUM. ALL OTHER CONTROLS IN NORMAL OPERATING POSITION. INDICATES PRINTED CIRCUIT BOARDS.

UNLESS OTHERWISE SPECIFIED:
 CAPACITOR DECIMAL VALUE IN MF. ALL OTHERS PF. CAPACITANCE VALUES ONLY ARE SHOWN ON SCHEMATIC DIAGRAM. FOR COMPLETE DESCRIPTION REFER TO PARTS LIST.
 RESISTORS ARE 10%, 1/2W.

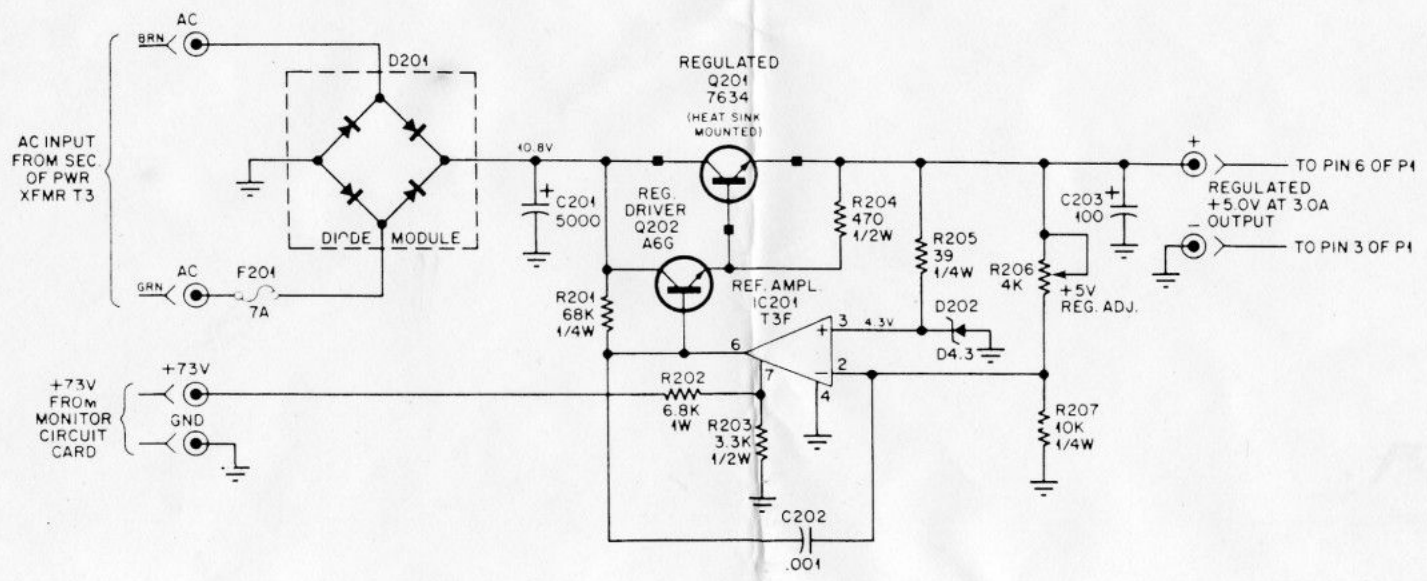


Schematic Diagram



- NOTES**
- UNLESS OTHERWISE INDICATED, ALL RESISTORS ARE IN OHMS, 100K, 1M, AND CAPACITORS ARE IN MICROFARADS. REFER TO PARTS LIST FOR COMPLETE DESCRIPTION.
 - ⊙ REPRESENTS MALE PIN ON CIRCUIT CARDS.
 - ⊙ REPRESENTS SOCKET/FEMALE PIN CONNECTION.
 - ⊙ REPRESENTS PLUG/MALE PIN CONNECTION.
 - ⊙ REPRESENTS HOLDER LEVELLY CONNECTED TO AN OFF-CIRCUIT CARD COMPONENT.
 - ⊙ REPRESENTS ORIGIN OF VOLTAGE INDICATED.
 - M REPRESENTS COMPONENTS THAT ARE CHASSIS MOUNTED NOT ON A CIRCUIT CARD.
 - # WAVEFORM TAKEN FROM POINT INDICATED TO WHERENAP PIN "1-2".
 - * WAVEFORM TAKEN FROM POINT INDICATED TO GROUND SIDE OF RES.
 - D.C. VOLTAGES TAKEN WITH RESPECT TO CHASSIS GROUND, NO SIGNAL INPUT. HEIGHT CONTROL SET TO MECHANICAL CENTER. VOLTAGE READINGS ARE ±10%.
 - A.C. WAVEFORMS:
VIDEO SIGNAL: 2.0V-P-P TO 2.5V-P-P APPLIED TO COMPOSITE VIDEO INPUT CONNECTOR P1. CONTRAST CONTROL (R6) ADJUSTED TO 2.1V-P-P VIDEO SIGNAL AT BASE OF Q2 (SEE NOTE 2). HEADSET HEIGHT CONTROL AND ADJUST WIDTH CON SO RASTER TOUCHES EDGE OF CRT SCREEN, IF RASTER IS PRESENT. WAVEFORMS VARY WITH ASSOCIATED CONTROL SETTINGS.

M5010-155, M7010-155 - Diagram Schematic



+5 Volt Supply - Diagram Schematic

MIRCO GAMES GMBH.

GARANTIEURKUNDE

Mirco garantiert, daß die Produkte frei von Material- und Verarbeitungsfehlern sind und gewährt bei normaler Benutzung und Wartung eine Garantie von zwölf (12) Monaten ab Lieferdatum ~~auf alle Teile mit Ausnahme der Potentiometer, für die die Garantiezeit neunzig (90) Tage ab Lieferdatum beträgt.~~ ÜBER DIE IN DIESER GARANTIEURKUNDE AUSDRÜCKLICH AUFGEFÜHRTE GARANTIELEISTUNGEN HINAUS MACHT MIRCO IN BEZUG AUF DIE GERÄTE KEINERLEI ZUSICHERUNGEN UND GEWÄHRT KEINERLEI GARANTIE, WEDER AUSDRÜCKLICH NOCH STILLSCHWEIGEND, KRAFT GESETZES ODER AUF ANDERE WEISE, EINSCHLIESSLICH ZUSICHERUNGEN ODER GARANTIEEN IN BEZUG AUF DIE MARKTFÄHIGKEIT ODER DIE EIGNUNG FÜR EINEN BESONDEREN ZWECK, ODER IN BEZUG AUF DIE VERLETZUNG VON PATENTEN. MIRCOS Leistungen gemäß dieser Garantieurkunde beschränken sich auf die Reparatur oder den Ersatz von Teilen, die auf Kosten des Käufers an MIRCOS Fabrik zurückgeschickt worden sind und deren Untersuchung einen unter diese Garantiebedingungen fallenden Mangel ergeben hat, und auf den Versand dieser reparierten oder ausgetauschten Teile an den Käufer ab Werk. Diese Garantiezusage bezieht sich nicht auf MIRCO-Produkte, die von unbefugtem Personal oder unbefugten Kundendienststellen auf irgendeine Art repariert oder umgebaut worden sind, oder an denen die Seriennummer geändert oder entfernt worden ist.

Mit Annahme der Waren übernimmt der Käufer die Haftung für jegliche Schäden und Verletzungen, die sich aus der Benutzung oder der unangemessenen Benutzung der Geräte durch den Käufer, seine Angestellten oder andere Personen ergeben könnten, und verpflichtet sich, MIRCO GAMES GMBH. von jeglicher Haftung freizustellen, und in Bezug auf Ansprüche, die sich aus der Benutzung der Produkte durch irgendeine Person ergeben könnten, schadlos zu halten.

Für Garantieleistungen zurückgeschickte Teile müssen so verpackt sein, daß eine Beschädigung auf dem Transport ausgeschlossen ist, und sind an MIRCO GAMES GMBH., 6078 Neu-Isenburg, Dornhofstraße 38, Deutschland, zu adressieren. Hierfür wird die Originalverpackung empfohlen.

Serien-Nr. des Spiels _____

Kaufdatum _____ Heutiges Datum _____

Name _____

Straße, Hausnummer _____

Ort (Postleitzahl) _____

Wo wurde das Spiel gekauft? _____

Name des Händlers _____

Wo wird das Spiel benutzt? _____

Lokale Kundendienststelle _____

DIESE KARTE MUSS INNERHALB VON FÜNF (5) TAGEN NACH KAUF AN MIRCO GAMES GMBH ZURÜCKGESCHICKT WERDEN, DAMIT DIE GARANTIE WIRKSAM WIRD.

Bitte
freimachen

MIRCO GAMES GMBH.

6078 NEU-ISENBURG

Dornhofstraße 38

Telefon 0 61 02-60 25

Telex-Nr. 417627 Mirco d